

WaveCAST Network Analyzer

Overview and Features

WILLIAMS **AV**

Overview

The WaveCAST Network Analyzer is a PC-based utility program designed for project planning, implementation and troubleshooting.



Use during pre-sales site surveys to gauge a customer's network infrastructure for WaveCAST compliance.

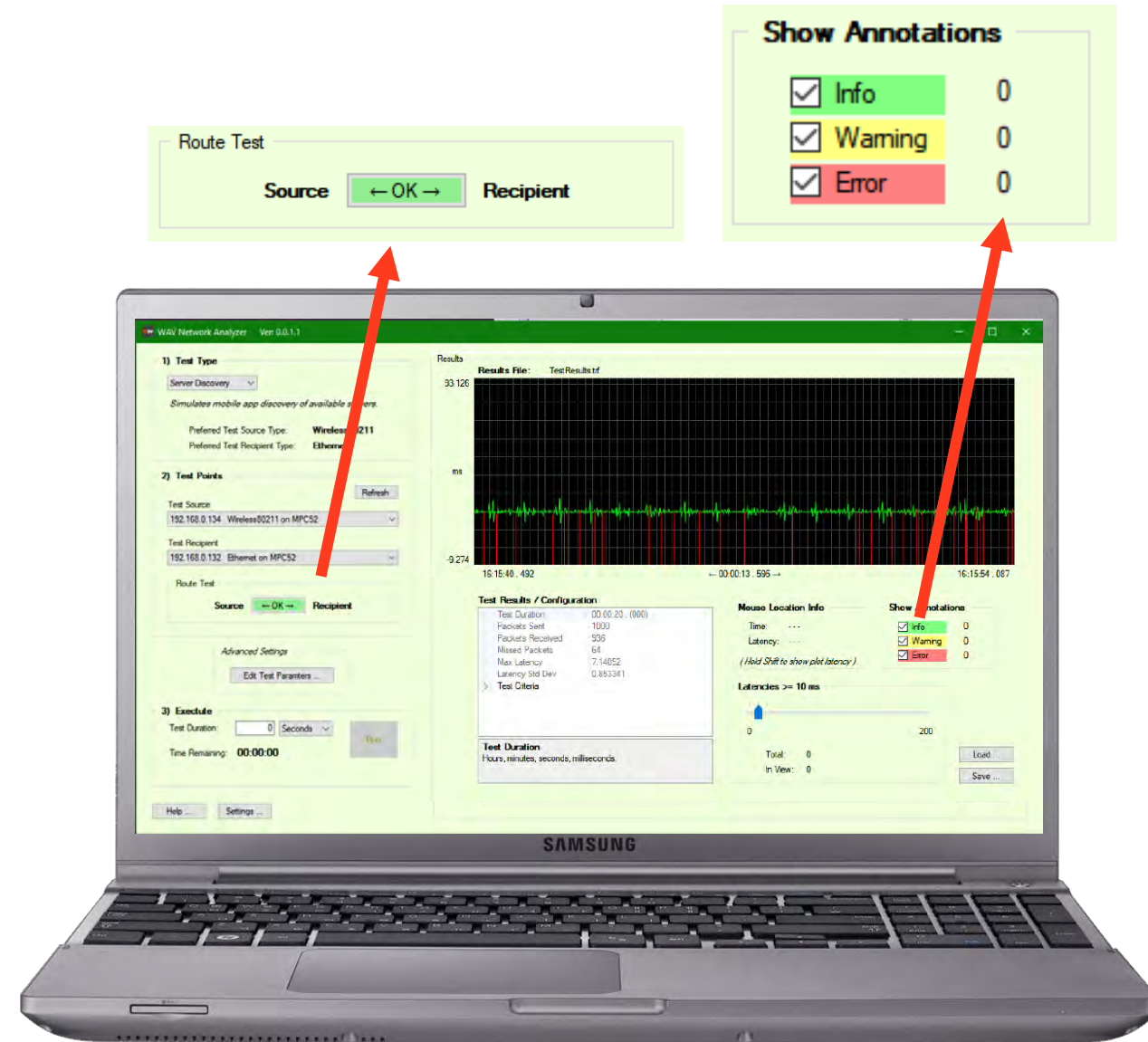


Use post-install to check on changes in network performance.

Ideal for complex networks and high user/channel count environments.

Features

- **Simple Testing.** Tests can be conducted and understood by an AV professional with a general IT knowledge.
- **Easy to Interpret.** Graphical status representation (red, yellow, green) for easy interpretation of results.
- **Detailed Reports.** Detailed information provided for adjustments/troubleshooting by a networking specialist.



Connection Options

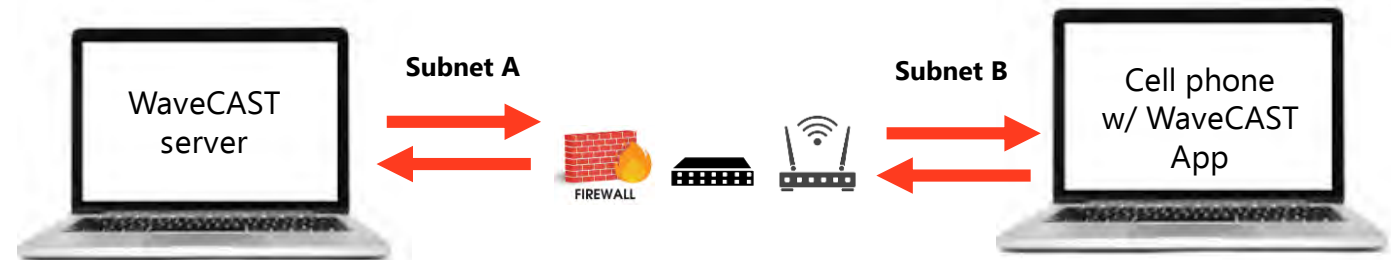
Option 1

Using 1 laptop, masquerading as both a WaveCAST server and cell phone, running the WaveCAST app for a roundtrip check.



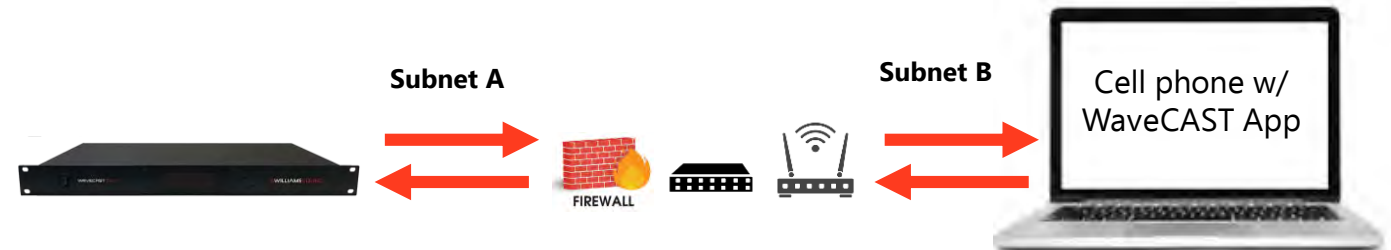
Option 2

Using 1 laptop, masquerading as a WaveCAST server and another laptop masquerading as a cell phone running the WaveCAST app connected to different nodes on a network or across subnets.



Option 3

Using a WaveCAST EIGHT server and a laptop masquerading as a cell phone running the WaveCAST app connected to different nodes on a network or across subnets.





WaveCAST Network Analyzer is available free of charge.

Contact TechBlue team to get a copy of the Network Analyzer



techblue@williamsav.com